

TWIST WRAP

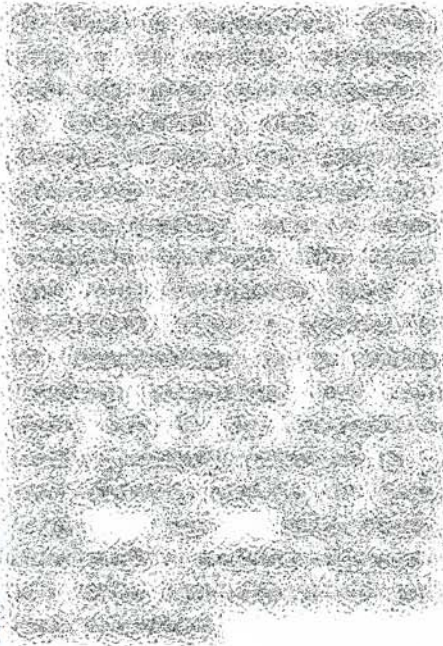
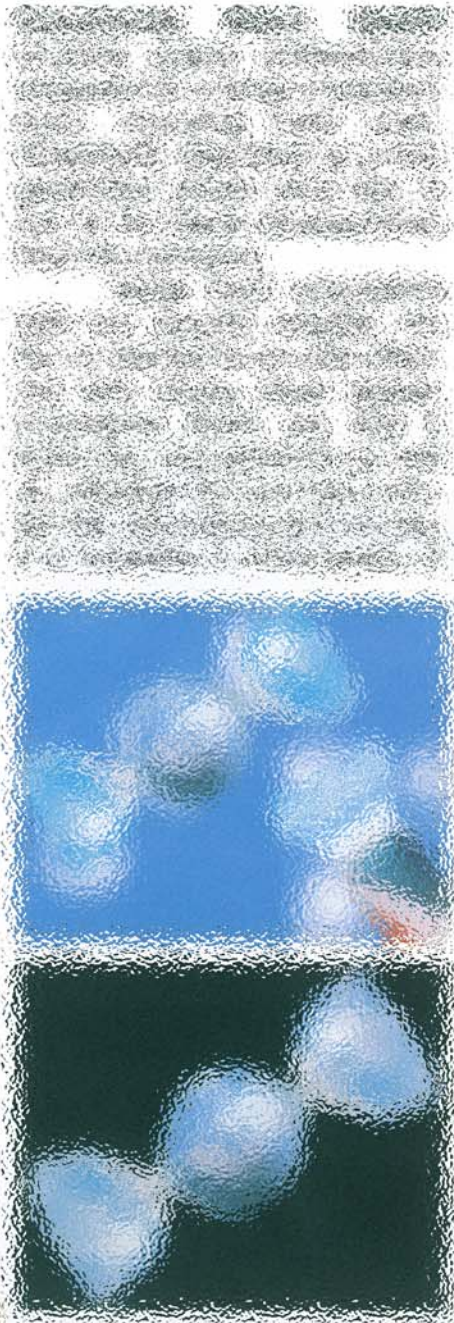
Special Report

Twist Wrap Technology

The latest developments from the world of twist wrap.

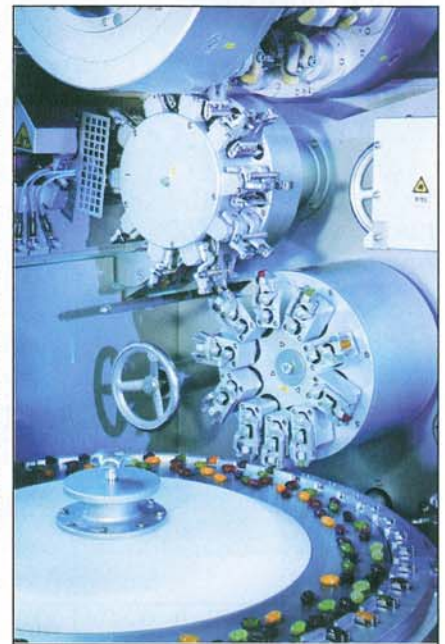


Image: THEEGARTEN-PACTEC GmbH & Co. KG



Maximum capacity

THEEGARTEN-PACTEC GmbH & Co. KG offer a wide variety of twist wrap machines for a range of confectionery products including hard-boiled candies, cut and wrap products and chocolate. High demands on hygiene and shelf life make airtight packages more and more necessary, even in the area of double twist wrapping. To stay ahead of this, the company have developed the "protected twist" wrapping style. This is based on standard twist wrapping machines in combination with a cold seal mask coat-



ed foil. THEEGARTEN-PACTEC offer "protected twist" machinery in all product categories: cut and wrap, hard-boiled candies and chocolate products.

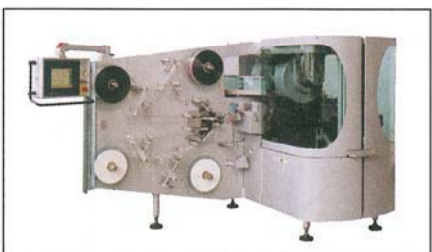
Continued >>



TWIST WRAP

Special Report

<< Continued



The range of machinery includes medium-speed continuous motion wrapping machines for a variety of different wrapping styles. The modular design means high flexibility and easy conversion to different sizes, shapes and wrapping styles, reducing cost-intensive downtime. For double-twist wrapping, the maximum output of these machines is 1200 pieces per minute, with more complicated procedures like side or top single-twist still achieving up to 900 per minute. THEEGARTEN-PACTEC's EK4 exceeds these capacity figures and is able to wrap up to 2300 hard candy pieces per minute in double-twist style, depending on product size and wrapping material. Gentle product handling is guaranteed, and stress applied to the product can be reduced by up to 30%. Slower twist wrap machines with capacities of up to 550 wrapped products per minute are also available.

The well-established CWM (chocolate wrapping machine) is designed for multiple wrapping styles. Most recently, new wrapping style Top Clip was integrated into the machine, with a maximum capacity of 200 products per minute.

